

FOUNDATION LEARNING AND SUPPORT



Foundation Level courses focus on developing skills for young people and adults who are working towards qualifications at Entry Level, Level 1 and Level 2.

We run a range of courses that are bespoke to the varying needs, skills and abilities of our learners and that are aligned with their future ambition.

There is a focus on independence progression and skills in the Entry Level range and, at Level 1, there is a focus on a vocational area of your choice. The GCSE Fast Track course focuses on Level 3 progression routes.

Whichever level or course you choose you will be taught by specialist teachers and supported in class by our learning assistants to help you get the best out of your time at college. Our aim is to help you to progress to the next level of programme in the area that best suits your skills and to open opportunities for your future, whether that be independent living, further study, or employment.

ENTRY LEVEL PROGRAMMES

Gateway to Independence

This course is for you if you want to become more independent. You will learn about how your local community works and how to use your skills so you can feel more confident and do more things for yourself. You will be taught in small groups and be in college three and a half days a week.

Entry criteria: Interview only.

How to apply: Visit apply.exe-coll.ac.uk to apply online.

Gateway to Progression

This course is for you if you are not sure what you want to do in the future. Here you will explore a range of employment options and we will work with you to develop your interview skills and participate in community-based projects. Alongside this you will study English and Maths and work closely with your tutor to help you progress. This course is usually taught in groups of 14-16, over three to four days a week.

Entry criteria: Grade 1 English and Maths, or below.

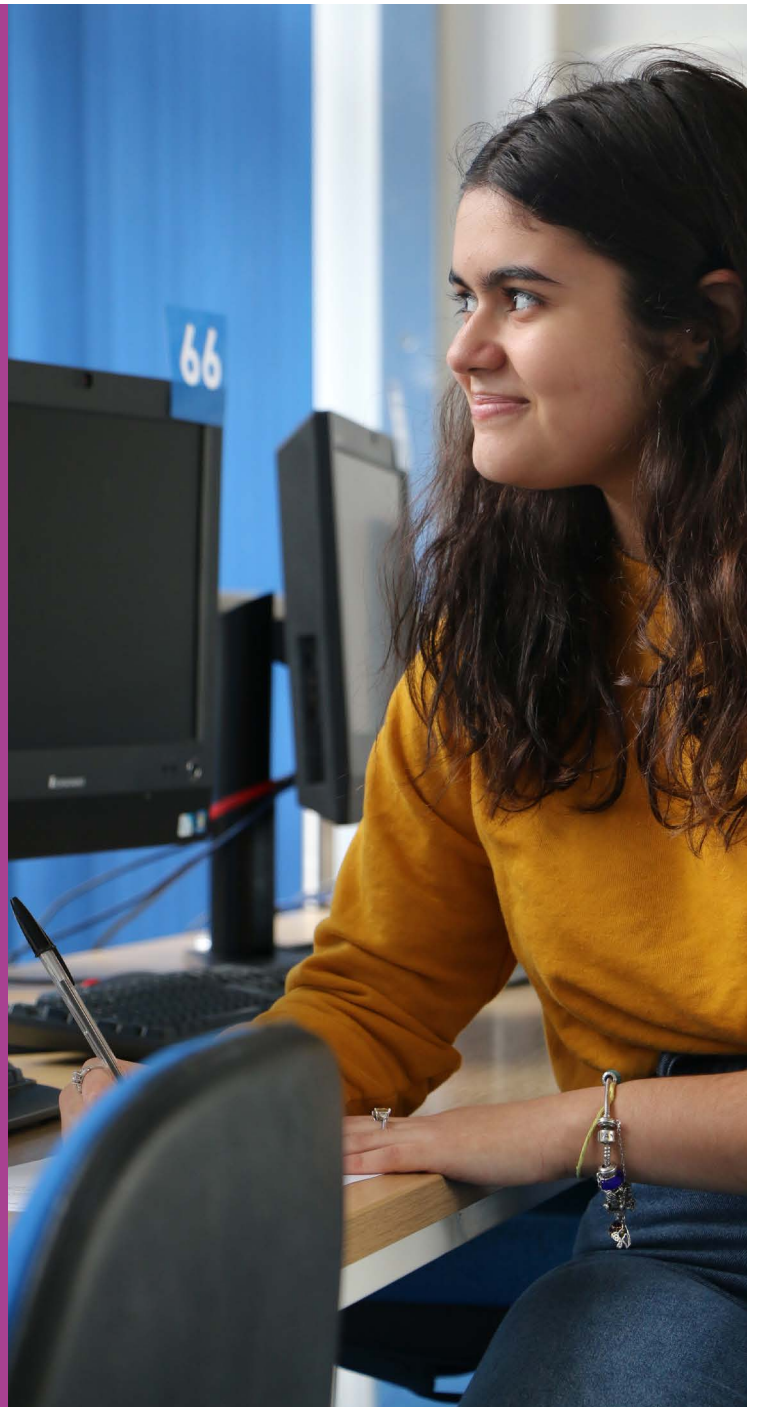
How to apply: Visit apply.exe-coll.ac.uk to apply online.



If I had to put my college experience in a few words I would say 'completely wonderful'. The classes were interesting and the tutors were very helpful and caring. This course helped me in several aspects and it made me more confident about what I wanted to do in the future.

It made me realise I wanted to pursue a career in Business, which I never believed I would have an interest in. I really enjoyed meeting new people and learning new things. I have a good feeling that my second year at college will be as pleasant as the previous one. I would absolutely recommend Exeter College; it is the best option for someone that wants a successful career and a bright future."

Ana Julia, Studied Progression Gateway
Previously studied in Brazil



LEVEL 1 PROGRAMMES

These courses are for you if you know the kind of work you would like to train for. There are a range of courses that give you an introduction to your chosen world of work. Assignments are set regularly and will contribute to your overall grade. You will engage in work experience with business partners to broaden your knowledge. You will study English and Maths alongside your main BTEC qualification if you haven't already gained a GCSE at grade 4. You will be taught in groups of 14-16, over three to four days a week.

The following BTEC Introductory Diplomas are available:

- ▶ Business
- ▶ Digital Media
- ▶ Expressive Arts
- ▶ Health and Social Care
- ▶ Hospitality and Tourism
- ▶ Information Technology
- ▶ Public Services
- ▶ Sport

Entry criteria: 4 GCSEs at grade 2, including English and Maths.

How to apply: Visit apply.exe-coll.ac.uk to apply online.



OUTREACH PROGRAMMES

New Directions

This course is for you if you need a gentler route back into education. Initially you will work with a mentor who, over several weeks, will link you with another student and eventually reintroduce you to group working. You will work on an action plan to help you move back into full time courses alongside an academic project which focuses on your interests and aspirations. The programme starts with only a few hours per week and progresses to a number of days per week, as is appropriate. This is a 12 week course.

Entry criteria: Interview only.

How to apply: Visit OutReach@exe-coll.ac.uk to apply online.

Positive Pathways

This course is for you if you are looking to re-engage with full time programmes later in the year. The course is structured around self-development and hands on activities that make a difference in the community. You will learn about teamwork, responsibilities and how to make a positive contribution to your local area. You will participate in this programme over three days per week. The days are shorter than for some other courses and start at 10am. This is a 12 week course.

Entry criteria: Interview only.

How to apply: Email OutReach@exe-coll.ac.uk.

OUTREACH PROGRAMMES - *CONTINUED*

Prince's Trust

This course is for you if you are ready to get stuck in and take on new challenges. You will work with a variety of other young people aged 16 to 24 years old who all want to contribute to their community through teamwork. Work experience, community activity, residentials and actively pushing your boundaries are all elements of this programme. The programme runs four and a half days per week and is a 12 week course.

Entry criteria: Interview only.

How to apply: Email OutReach@exe-coll.ac.uk.

Supported Internships

This work based course is for you if you are 19 or over, you hold an EHCP (Education, Health and Care Plan) and you have a desire to progress towards employment. You will spend two days in a work placement as an intern. You will be supported by job coaches who will work with you and the employer to help you achieve your goals. You will spend one day a week at college completing work around employability skills, while brushing up on English and Maths skills needed for the workplace. At the end of this programme, you may receive a reference from both your tutor and your internship employer, or an interview for employment. The programme runs for 36 weeks, over three days a week.

Entry criteria: Interview only.

How to apply: By emailing supportedinternship@exe-coll.ac.uk

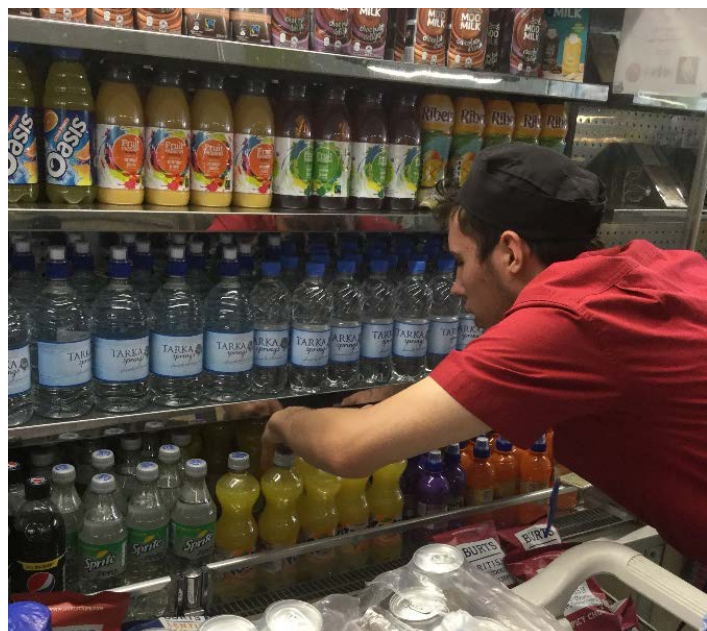


Young ESOL Plus (YES+)

This course is for you if you are new to living in the UK and you are between the ages of 16 to 18 years old. You will still be developing your English language, speaking and listening skills in the ESOL Entry range and you will be supported to explore British society alongside personal and social development skills. This programme runs for 36 weeks, over four to five part time days per week.

Entry criteria: Interview and assessment.

How to apply: Visit apply.exe-coll.ac.uk to apply online.



Find out more about all of our Foundation Learning courses by searching our website exe-coll.ac.uk. You can also call 01392 400500 or email info@exe-coll.ac.uk.