

# ACCESS TO HIGHER EDUCATION DIPLOMAS

## YOUR GUIDE



**ADULT  
LEARNING**

**HIGHER  
TECHNICAL  
EDUCATION**

***Skills employers need.***

exeter college 

# Hello

## Welcome to our guide about the Access to Higher Education Diplomas we offer here at Exeter College.

Access courses can help people without traditional qualifications, or those who have been out of education for some time, prepare for university. They are specifically designed to help you progress confidently on to professional advanced training. Our students often tell us they love the way the courses fit around their current lifestyle.

Exeter College has been running the nationally recognised Access to Higher Education programme since 1987. We hope you decide to join this successful programme and look forward to welcoming you soon.

## Contents

<b>About us:</b>	What is an Access Diploma?	3
	Progression and careers	4
	Destinations	5
	What you need to know	6
	How to apply	7
	Finance and Advanced Learner Loans	8
	Levels Explained	11
	Preparation for Access	12
<b>Diplomas:</b>	Art and Design	13
	Business	14
	Healthcare	16
	Humanities	18
	Science (Biology and Chemistry)	19
	Science (Physics and Maths)	21
	Social Science	22

# What is an Access Diploma?

The Access to Higher Education (HE) Diploma is a qualification which prepares students for study at degree level. If you would like to go to university but left school without the qualifications you need, or you are thinking of a career change, then an Access to HE course could be for you.

**The Access to HE Diploma is widely recognised by UK universities, and many actively encourage applications from Access to HE students.**

## Did you know?

Each year, around 20,000 Access to HE students apply for a degree course at a UK university. They go on to study a wide range of subjects, including law, education, and business.

## Why study an Access course?

As well as developing your knowledge in your chosen subject area, you will also be developing essential skills to prepare you for university level study.

- Study skills - reading, note taking, essay writing, research skills, reference writing, revision strategies, exam practice, presentation skills, group work, seminars and discussions.
- Academic skills - analysis, evaluation, discussion, clear explanation and description.
- Confidence in independent study and time management.



# Progression and careers

**Studying for just one year with us can massively change your prospects and set you on the path to success.**

Here is a sample of just some of the potential study/careers routes you could take after studying an Access Diploma with us.

## **Access Diplomas currently available:**

### **Art and Design**

Textile and Fashion Design, Ceramics, Photography, Graphic Design, Fine Art and Illustration.

### **Business**

Accountancy, Leadership and Management, Business Administration or Business Studies.

### **Healthcare**

Occupational Therapy, Nursing (including Adult, Mental Health and Child Nursing), Physiotherapy, Midwifery, Optometry, Dental Hygiene, Medical Imaging, Speech and Language Therapy, Nutrition, Podiatry, Health and Exercise Science, Neuroscience or Paramedic Sciences.

### **Humanities**

History, Archaeology, Politics, Teaching, English, Creative Writing, Journalism, Criminology, International Relations, Liberal Arts, Film, Law or Geography.

### **Science (Biology and Chemistry)**

Dental Hygiene, Medicine, Radiography, Veterinary Science, Chemical Engineering, Forensic Science or Chemical Research.

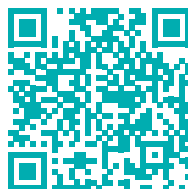
### **Science (Physics and Maths)**

Meteorology, Clinical Imaging, Aeronautical/Astrophysical Engineering, Actuary or Data Analytics.

### **Social Science**

Teaching, Psychology (including Clinical Psychology), Law, Criminology, Crime and Security Science, Occupational Therapy, Sociology, English, International Relations, Politics, Anthropology, Social Work and Geography.

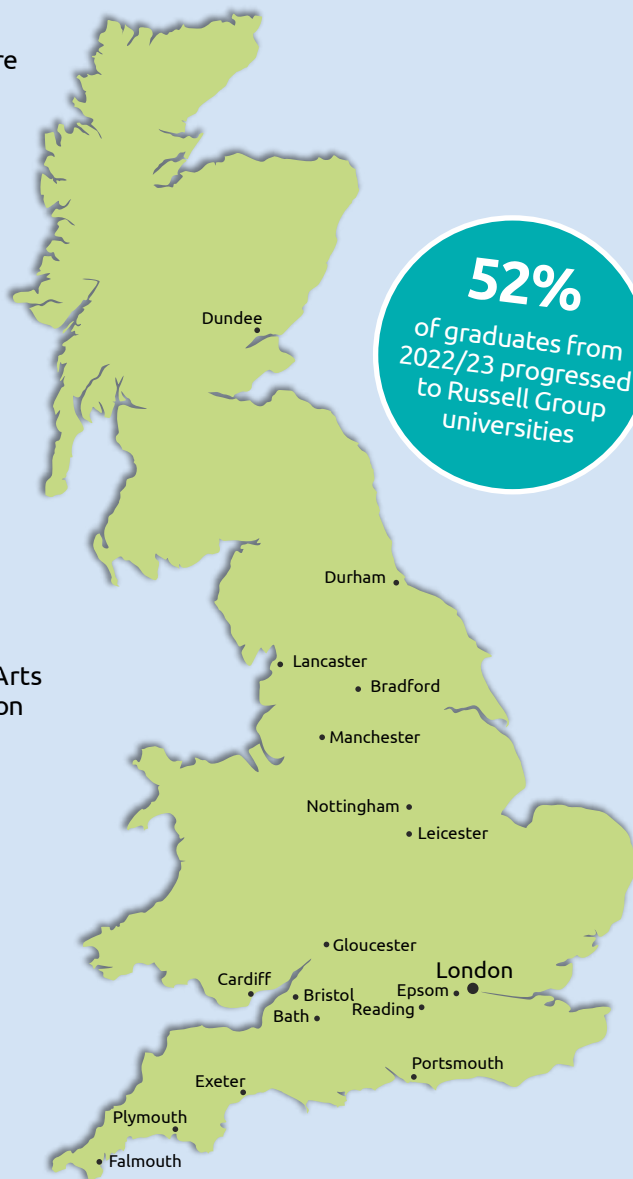
Many of our learners progress on to Higher Education. Scan here to hear one our learner's stories:



# Destinations

Our Access students progress to prestigious universities across the country in a wide range of subjects. The map below shows where graduates from the 2022/23 academic year continued their studies.

- University of Gloucestershire
- Arts University Plymouth
- University of Bath
- Bath Spa University
- University of Bradford
- University of Bristol
- Cardiff University
- De Montfort University
- University of Dundee
- Durham University
- University of Exeter
- Exeter College
- Falmouth University
- Lancaster University
- University of Manchester
- University of Nottingham
- University of Plymouth
- Plymouth Marjon
- University of Portsmouth
- University of Reading
- University College London
- University for the Creative Arts
- University of the Arts London
- York St John



# What you need to know

**The Diploma course is an intensive one year programme, designed to ensure students have the best chance of successfully completing the course.**

## **We are looking for applicants with the following qualities:**

- A high level of motivation to be an independent student with a willingness for self study.
- The commitment to studying a full time, challenging course.
- GCSE English and Maths at grade C or above\*.
- GCSE Science at grade C or above (for Science and Healthcare Diplomas).
- Evidence of recent study is desirable.
- A clear idea of the university level programmes that you wish to apply for.

*\*Please note, from 2017 a grade C in English and Maths equivalent is a grade 4(C)*

**Courses start in September** and run for 36 weeks. The College has an expectation of a minimum **95% attendance** in order for students to achieve their full potential.

You will usually spend up to **3 days per week in College** - lessons are timetabled between the hours of **9am and 4.30pm**, depending on the Diploma.

These courses will require a minimum of **20 hours** independent study at home per week and a total of 12-14 hours of teaching.

Study will be a combination of lectures, small group work, practical exercises, group discussions, seminars and tutorials. You will collect evidence of your work and present it in a portfolio.

All Access students will also be enrolled on a supplementary IT course, at no extra cost. Essential Digital Skills has been designed to enhance and polish IT skills for use in the real world and is vital for university and future careers.

**Please note** – this is a full time qualification that will require serious commitment. It is intended only for people with a clear plan to progress on to a specific course at university level. You will need the time and capacity to commit to full time study.

# Example timetable (Access to Healthcare):

		Wednesday	Thursday	Friday
9.00-10.30	Monday - No lessons Tuesday - No lessons	Psychology core subject (Behaviourism Level 3 Graded Unit)	Health Studies core subject (Health Promotion Level 3 Graded Unit)	Biology core subject (Cell Biology and Biochemistry Level 3 Graded Unit)
10.30-10.45		Break time	Break time	Break time
10.45-12.00		Psychology core subject (Behaviourism Level 3 Graded Unit)	Psychology core subject (Behaviourism Level 3 Graded Unit)	Study period
12.00-13.00		Lunchtime	Study skills (IT for academic study)	Biology core subject (Cell Biology and Biochemistry Level 3 Graded Unit)
13.00-14.00		Study skills with personal tutor	Study skills (IT for academic study)	Biology core subject (Cell Biology and Biochemistry Level 3 Graded Unit)
14.00-15.00		1:1 tutorial	No lessons	Biology core subject (Cell Biology and Biochemistry Level 3 Graded Unit)
15.00-16.00		1:1 tutorial	No lessons	No lessons

## How to apply

- 1 Visit the website to apply online at **apply.exe-coll.ac.uk** or you can visit **exe-coll.ac.uk/Access** to download an application form. For further advice from our Adult Advice Team please call **01392 400170** or email **adultadvice@exe-coll.ac.uk**.
- 2 You will be invited to attend a one to one interview with a course tutor where you will have the opportunity to find out more about your chosen course. It will also be a chance for our tutors to find out more about you and your previous skills and knowledge. You will also need to provide evidence of your qualifications – lost certificates can be applied for by contacting schools or exam boards. Please be aware that there is a cost to this.

## Extra support

All students that disclose a specific learning need at the application stage will be invited to a **learning support interview**. Our specialist learning support team will assess your needs and discuss how we can support you throughout your course. We can offer a range of services including **1:1 study skills support, dyslexia support, and support with applying for exam access** arrangements and **in class support**.

# Finance and Advanced Learner Loans

**Fees for Access to Higher Education courses are dependent on your circumstances and chosen course and are subject to review on an annual basis. Please check our website for up to date information.**

## Fees for 2024/25

Art and Design	£3928
Business	£3022
Healthcare	£3384
Humanities	£3022
Science (Biology and Chemistry)	£3384
Science (Physics and Maths)	£3384
Social Science	£3022

## Funding guidance

If you are currently 19-23 and do not hold a full Level 3 qualification (see below for what qualifies as a full Level 3) you would be eligible for full funding and could do any Access course for free.

### 1) Level 3 Entitlement

If you are currently under the age of 24 and don't hold a full Level 3 qualification (see below for what qualifies as a full Level 3) you could do any Access course for free.

- 4 AS Levels or more
- 2 A Levels or more
- National Diploma or higher
- City & Guilds Advanced Craft
- Access to HE Diploma
- HNC/HND
- 1<sup>st</sup> Degree/Higher Degree
- NVQ 3 or higher
- Advanced GNVQ
- ONC/OND
- RSA Diploma or higher
- GNVQ intermediate or higher
- TEC Cert/Diploma
- HE Cert/Diploma
- Nursing (SRN)
- LCCI Cert (2<sup>nd</sup> Level) or higher
- LCCI Advanced Level
- Pitmans Level 2 Int or higher
- ESOL/Foreign Lang Advanced
- TEC Cert/Diploma



## 2) Advanced Learner Loan (ALL)

### **Eligibility for ALL. You will need to be:**

- aged 19 and over at the start of the academic year (on 31<sup>st</sup> August 2024).
- studying a Level 3 to Level 6 qualification.
- living in the UK for the last 3 years
- a UK resident or hold Settled status within the UK.

If you are not eligible for Level 3 funding you can take out an Advanced Learner Loan to cover the Access course fee.

### **When will I repay my loan?**

- Loan repayments are linked to what you earn when you've finished your course, not how much you borrowed.
- You only need to start paying back your Advanced Learner Loan when you've finished your course and you're earning more than £27,295 a year. You pay back 9% of the money you earn over £27,295.

### **Fee liability information:**

We would advise that should you take out an Advanced Learner Loan and not complete your course, you are liable for any payments made by the loan company on your behalf to the College, up to the point of leaving. In addition, you will also be liable to pay any outstanding course costs to Exeter College. You would also lose your entitlement to one of your four loan opportunities. We are not able to advise on personal financial matters and recommend that you contact the Money Advice Service

if you are considering applying for the Advanced Learner Loan <https://www.moneyadviceservice.org.uk>

The National Careers Service can also offer information on funding. In addition to this they provide 1:1 careers guidance on a range of work and career choices. Please visit our website for information on Advanced Learner Loans <https://www.exe-coll.ac.uk/Adults/Support/AdvancedLearnerLoan>, or how to pay your fees [www.exe-coll.ac.uk/adults/apply/pay](https://www.exe-coll.ac.uk/adults/apply/pay)

### **Did you know?**

If you take out a loan for an Access to HE Diploma and progress to university level study, the Student Loans Company will write off the balance of your first loan, once you complete your university level qualification.

For more details about how you can cover the costs of your course with an Advanced Learner Loan, visit [www.ucas.com/student-finance-england/advanced-learner-loans](https://www.ucas.com/student-finance-england/advanced-learner-loans) or [www.gov.uk/advanced-learner-loan](https://www.gov.uk/advanced-learner-loan)



### 3) Bursary Fund

#### **This funding is based on your household income.**

The information below provides guidance on what a student might be eligible for following the assessment of household income. This is based on guidance for this academic year's funds and so is subject to change.

Please apply early as funds are limited and financial support may not be offered in all circumstances.

#### **Income threshold**

Household income £50,000 or under:

#### **You can apply for help with**

- Travel to attend College
- Childcare (provider needs to be Ofsted registered)
- Essential kit and equipment
- Books
- Trips and visits
- Lunch credit
- Accreditation fees or professional membership fees
- Domestic emergencies and emergency accommodation
- Financial support related to a traineeship (including the work placement element)

#### **How do I apply and what evidence do I need to provide to show my household income?**

To start your application, please complete a financial support application form, and return to the Bursary Team at Greystone House (Hele Road site) with the following evidence:

- Universal credit statement (most recent)
- All pages of a tax credit award notice showing finalised income for 2021/22
- P60/Last 3 months or 12 weeks of pay slips
- Most recent tax return (if self-employed)
- Welfare benefits letter dated within the last 3 months
- Pension statement
- Details of income from all other sources e.g. shares, investments, savings, rental income

### 4) Childcare costs

If you are applying for assistance with childcare costs you will be required to complete an additional form and provide further information. If you are aged under 20 please apply to the government's Care to Learn scheme ([www.gov.uk/care-to-learn](http://www.gov.uk/care-to-learn)).

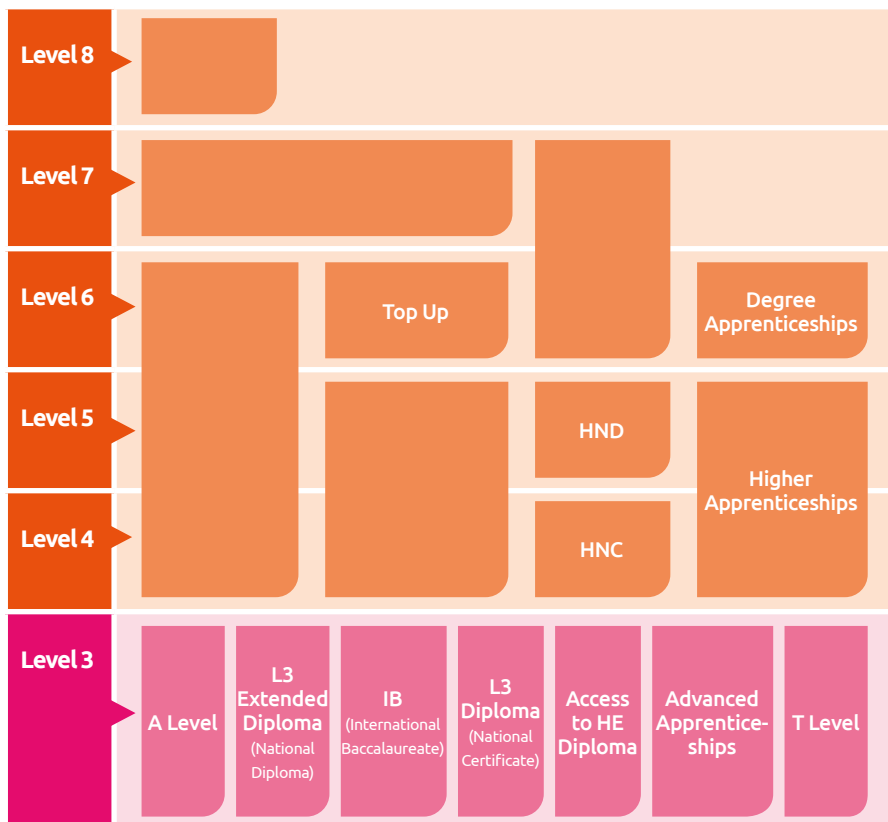
### 5) Nursing Bursary

If you are hoping to start your Access to Healthcare course in September 2023 with a view to progress on to nursing, the government is offering a non-repayable bursary of between £5,000 to £8,000.

You can read more about the nursing bursary by visiting [www.gov.uk/government/news/nursing-students-to-receive-5-000-payment-a-year](http://www.gov.uk/government/news/nursing-students-to-receive-5-000-payment-a-year)

# Levels explained

We appreciate that there are numerous choices available when it comes to deciding the right path for you. We hope the simple guide below will help explain the different levels. If you need advice on which qualification is right for you, please don't hesitate to contact us.



**Level 3** is the key to your university level education... these qualifications will help you to progress to achieve your career goals.

# Preparation for Access courses

**If you feel that you are not quite ready for an Access course then we offer a range of courses to help you prepare for your Access Diploma.**

## Preparation for Access – Science

This course is **highly recommended** for all students who have applied for and been accepted onto the Science or Healthcare Access to Higher Education Diplomas to prepare them for the specialist course content.

## GCSE English and Maths

For those who do not have a GCSE grade C or 4 or above in English and/or Maths, these courses are offered free of charge (providing you are a British Citizen or from the European Union).

**It is essential** that you complete these qualifications before applying for your Access to Higher Education Diploma.

## GCSE Biology

A GCSE in Science is needed for both of our Access to HE Diplomas in Science as well as the Healthcare diploma. We offer this course on Tuesday evenings. See our website for further details.

# Art and Design

Exeter College provides the physical resources, teaching excellence and infrastructure needed to support you in your creative journey and your progression to Higher Education. We offer a good proportion of direct contact time with lecturers and high levels of tutorial support and guidance in dynamic and stimulating learning environments with subject specific base rooms. This Diploma offers a broad based understanding of art and design and a grounding in a range of skills both traditional and digital.

## Units within this course are:

- Photography Skills
- Graphic Design
- Ceramics Working with Clay
- Contextual Studies
- Working with 3D Media
- Textiles
- Colour Theory and Application
- Extended Study in the Visual Arts (Final Major Project)
- Historical Perspectives in Art
- Observed Drawing
- Perspective Drawing
- Portfolio Development
- Mounting an Exhibition
- Study Skills: Presentation Skills, Research and Referencing, Progression Skills, Producing a Written Assignment

*Please note these are subject to change due to the awarding body currently reviewing Access to HE specifications.*

## Credit breakdown overview for this Diploma:

- Art History – 9 graded credits - 9 graded credits
- Practical units in different disciplines using a range of media 18 graded credits
- Drawing - 6 graded credits
- Portfolio, final major project and exhibiting 12 graded credits
- Introductory unit, progression and study skills – 15 credits total (ungraded)

Visit [exe-coll.ac.uk/Access](http://exe-coll.ac.uk/Access) for further credit breakdown information.

## What are the entry requirements?

You will need a grade 4(C) or above\* in GCSE English. (\* see page 11)

**Please note** that some universities will require a GCSE in Maths.

## Progression routes

Past students have gone on to work in or study various subjects, including: Animation, Photography, Textile Design, Graphic Design, Fine Art, Illustration, Architecture, Conservation, Fashion and Games Design.

# Business

**This Diploma is ideal if you want a career in business and need to gain the qualifications to get into university. The course is delivered in the new Digital and Data Centre, located in the city centre. Complete with digital learning laboratories, state-of-the-art IT suites and interactive seminar spaces, learners have access to cutting edge equipment to help prepare them for their next steps. The Diploma thrives on the links and interaction with the local business community.**

## **Units within this course are:**

- Business and the Economy
- Business Accounting
- Innovation and Creativity in Enterprise and Entrepreneurship
- Human Resources
- Marketing Tools
- Motivational Management and Leadership
- Planning and Promoting an Event
- Social Enterprise

*Please note these are subject to change due to the awarding body currently reviewing Access to HE specifications.*

## **Credit breakdown overview for this Diploma:**

- Business – 36 graded credits
- Sociology – 6 graded credits
- Law – 3 graded credits
- Introductory academic (3), Study skills (12) – 15 credits total (ungraded)

Visit [exe-coll.ac.uk/Access](http://exe-coll.ac.uk/Access) for further credit breakdown information.

## **What are the entry requirements?**

You will need a grade 4(C) or above\* in GCSE English and GCSE Maths.  
(\* see page 11)

## **Progression routes**

Business Administration, Business Studies, Leadership and Management and industry specific management degrees. You will be able to pursue jobs in Retail, Finance, Management, Hospitality, and Education. You could also progress on to study Business at a higher level at Exeter College.



# Healthcare

Within our Access to Healthcare Diploma, you will develop your knowledge around the human body and many aspects of psychology. This Diploma can be a great pathway to a career in nursing and other NHS Allied courses. Our dedicated staff deliver a course that yields a high success rate which is amongst the highest in the South West.

## Units within this course are:

### Introductory Academic, Study Skills and IT

- IT for Academic Study
- Research and Referencing
- Producing a Written Assignment
- Progression Skills
- Mathematics in a Health and Care Context

### Human Biology

- Cell Biology and Biochemistry
- Body Systems: Cardiac and Respiratory
- Infectious Diseases
- Homeostasis and Endocrine System
- Genetics

### Health Studies

- Health Promotion

### Psychology

- Behaviourism
- Carrying Out Research in Psychology
- Conformity and Obedience
- Understanding Stress
- Abnormal Psychology
- Treatments and Therapies

*Please note these are subject to change due to the awarding body currently reviewing Access to HE specifications.*

## Credit breakdown overview for this Diploma:

- |                                     |                                     |
|-------------------------------------|-------------------------------------|
| ▪ Biology – 18 graded credits       | ▪ Introductory academic (3), IT (6) |
| ▪ Psychology – 21 graded credits    | and Study skills (6) – 15 credits   |
| ▪ Health Studies – 6 graded credits | total (ungraded)                    |

Visit [exe-coll.ac.uk/Access](http://exe-coll.ac.uk/Access) for further credit breakdown information.

## What are the entry requirements?

You will need a grade 4(C) or above in GCSE English, GCSE Maths and any Science grade 4(C) or above.

## Progression routes

Past students have gone on to work in or study various subjects, including: Children's Nursing, Occupational Therapy, Physiotherapy, Adult Nursing, Optometry, Dental Hygiene, Mental Health Nursing, Midwifery, Medical Imaging, Speech and Language Therapy, Nutrition, Podiatry, Health and Exercise Science, Neuroscience and Paramedic Science.



## Nursing Bursary

You can read more about the nursing bursary on page 10 or by visiting [www.gov.uk/government/news/nursing-students-to-receive-5-000-payment-a-year](http://www.gov.uk/government/news/nursing-students-to-receive-5-000-payment-a-year)



# Humanities

**Humanities subjects give you the chance to analyse and understand the world around you. Whether you choose to study physical features of the landscape, the impact of globalisation on our culture and economy, or how events of the past have shaped our present, you will complete your studies with high-level skills of enquiry and analysis that are prized by universities and employers.**

## Units within this course are:

### English

- Appreciation of a Novel
- Appreciating Literature
- Appreciation of a Shakespeare Play
- Fairy Tales, Folklore and Culture

### History

- Causes of Revolution in Russia
- China from 1949
- The Cold War 1945-89
- The Suffrage Movement

### Politics

- Political Participation

### Introductory Academic, Study Skills and IT

- Introductory Academic - Introduction to Literature
- Producing A Written Assignment
- Research and Referencing
- Progression Skills
- Presentation skills

*Please note these are subject to change due to the awarding body currently reviewing Access to HE specifications.*

## Credit breakdown overview for this Diploma:

- |                               |                                      |
|-------------------------------|--------------------------------------|
| ▪ English – 21 graded credits | ▪ Introductory academic (3) and      |
| ▪ History – 18 graded credits | Study skills (12) – 15 credits total |
| ▪ Politics – 6 graded credits | (ungraded)                           |

Visit [exe-coll.ac.uk/Access](http://exe-coll.ac.uk/Access) for further credit breakdown information.

## What are the entry requirements?

You will need a grade 4(C) or above\* in GCSE English and GCSE Maths.  
(\* see page 11)

## Progression routes

You could go on to work or study various subjects, including: History, Archaeology, Politics, English, Creative Writing, Criminology, Geography, Journalism, International Relations, Liberal Arts, Film, Law and Teaching.

# Science (Biology and Chemistry)\*



Science  
Technology  
Engineering  
Maths

Want to be able to make informed decisions about your health, the environment or technological advancements? Students are highly successful on our courses due to experienced staff and their ability to develop your knowledge and enquiring mind through interesting units and research opportunities.

## Units within this course are:

### Biology

- Nutrition and Gaseous Exchange in Plants and Animals
- Biochemistry
- Body Systems: Cardiac and Respiratory
- Inheritance and Genetic Engineering

### Practical Scientific Project Chemistry

- Fundamentals of Chemistry:

### Experiments

- Hydrocarbons
- Medical Chemistry
- Physical Chemistry

### Mathematics

- Statistics
- Exponentials and Logarithms

*Please note these are subject to change due to the awarding body currently reviewing Access to HE specifications.*

## Credit breakdown overview for this Diploma:

- Chemistry - 15 graded credits
- Biology - 18 graded credits
- Maths - 6 graded credits
- Practical Scientific Project - 6 graded credits
- Introductory academic (6), IT (6) and Study skills (3) – 15 credits total (ungraded)

Visit [exe-coll.ac.uk/Access](http://exe-coll.ac.uk/Access) for further credit breakdown information.

## What are the entry requirements?

You will need a grade 4(C) or above in GCSE English, GCSE Maths and any Science grade 4(C) or above.

## Progression routes

Past students have gone on to work in or study various subjects, including: Conservation Biology, Environmental Science, Computer Science, Biosciences, Dietetics, Forensic Science, Radiography, Medical Science, Paramedic Science and Veterinary Science. You could also progress on to study Coaching and Fitness or Sports Therapy at a higher level at Exeter College.

**\*Please note:** this course does not cater for progression into Maths based higher education courses such as Engineering, Architecture and Physics.



# Science (Physics and Maths)



Science  
Technology  
Engineering  
Maths

This Diploma introduces you to a wide range of subjects, including Science, Engineering, Design, Environment, Mathematics, Computing and IT to prepare you for a wide range of qualifications.

## Units within this course are:

### Physics

- Nuclear Properties of Materials
- Work and Energy
- Kinematics, Projectiles and Momentum
- Waves, Light and Sound
- Electricity
- Astrophysics
- Heat

### Human Biology

- Genetics

### Practical Scientific Project

### Mathematics

- Advanced Mathematics 1
- Advanced Mathematics 2
- Calculus

*Please note these are subject to change due to the awarding body currently reviewing Access to HE specifications.*

## Credit breakdown overview for this Diploma:

- Physics – 21 graded credits
- Biology – 3 graded credits
- Maths – 15 graded credits
- Practical Scientific Project – 6 graded credits
- Introductory academic (6), IT (6) and Study skills (3) – 15 credits total (ungraded)

Visit [exe-coll.ac.uk/Access](http://exe-coll.ac.uk/Access) for further credit breakdown information.

## What are the entry requirements?

You will need a grade 4(C) or above in GCSE English, GCSE Maths and any Science grade 4(C) or above.

## Progression routes

You could continue study or start a career in subjects such as Meteorology, Clinical Imaging, Aeronautical/Astrophysical Engineering, Actuary or Data Analytics. You could also progress on to study Computing or Engineering at a higher level at Exeter College.

# Social Science

**Studying Social Science provides you with a wide range of transferable skills. Due to the varied nature of the subject, you could go on to further study in subjects such as Teaching, Law, Sociology or Psychology. The options are plentiful, but these subjects are unified by one thing - a focus on understanding the workings of human society.**

## Units within this course are:

### Psychology

- Behaviourism
- Carrying Out Research in Psychology
- Conformity and Obedience
- Pro-Social and Anti-Social Behaviour
- Understanding Stress
- Abnormal Psychology
- Treatments and Therapies (optional)

### Sociology

- Sociology of Education
- Sex and Gender Studies
- Research Methods in Sociology

- Crime and Deviance
- Sociology of Religion (optional)

### Introductory Academic, Study Skills and IT.

- Sociological Theory: An introduction
- Producing a Written Assignment
- Research and Referencing
- Progression Skills
- Presentation skills

*Please note these are subject to change due to the awarding body currently reviewing Access to HE specifications.*

## Credit breakdown overview for this Diploma:

### Psychology major students:

- Psychology – 24 graded credits
- Sociology – 21 graded credits
- Introductory academic (3) and Study skills (12) – 15 credits total (ungraded)

### Sociology major students:

- Sociology – 24 graded credits
- Psychology – 21 graded credits
- Introductory academic (3) and Study skills (12) – 15 credits total (ungraded)

isit exe-coll.ac.uk/Access for further credit breakdown information.

## What are the entry requirements?

You will need a grade 4(C) or above\* in GCSE English and GCSE Maths.  
(\* see page 11)

## Progression routes

Past students have gone on to work or study in: Teaching, Psychology, Law, Research, Linguistics, Criminology, Crime and Security Science, Clinical Psychology, Sociology, English, International Relations, Politics, Anthropology, Social Work or Geography.





# Contact us

If you have any questions about studying with us then please get in touch, we will always be happy to talk it through.

For more information about **Access Diplomas**, **Advanced Learner Loans** or to find out more about our **Higher Education qualifications** please visit [www.exe-coll.ac.uk](http://www.exe-coll.ac.uk) or contact our Adult Advisers on **01392 400170** or email **adultadvice@exe-coll.ac.uk**

Follow us:

